

# Odor Management Regulations in Pennsylvania

(Act 38 of 2005)



When new or existing Concentrated Animal Operations (CAOs) or Concentrated Animal Feeding Operations (CAFOs) are planning to construct new or expand existing manure storage or animal housing facilities, they are required to develop and implement an Odor Management Plan (OMP) for those new facilities. ONLY the manure storage or animal housing facilities with new construction activities are regulated facilities for the purposes of the Odor Management Act.

**The odor regulations do not apply to existing facilities.**

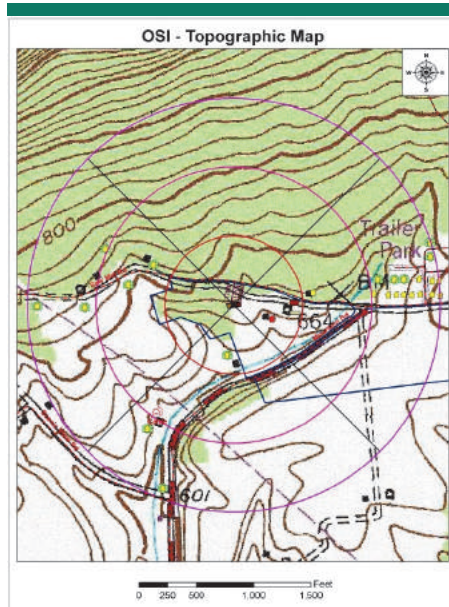
**The odor regulations do not address the land application of manure.**

## What is an Odor Management Plan?

An OMP is a written, site-specific plan that assesses the potential odor impacts from animal housing facilities and manure storage facilities. The Plan identifies practices to be implemented to manage the impact of odors generated from these facilities. Odor management plans are not required to eliminate odors, they only need to manage the offsite impacts. The PA statute recognizes the impracticality of completely eliminating odors associated with agricultural operations, as well as the evolving science of odor management.



Farms regulated by this statute must have an approved plan prior to construction of the new or expanded facilities, and any required odor-reducing practices must be fully implemented prior to commencing use of the new or expanded animal housing or manure storage facilities.



*Odor management specialists use maps and on-site visits to determine the potential impact to surrounding residences and businesses. The score will determine the degree of odor management practices a farmer must utilize.*

## OMPs include:

- 1) An evaluation and identification of the *potential* impacts must be conducted. This evaluation is typically done using the authorized Odor Site Index (OSI). The OSI will identify if the proposed structure(s) will have a
  - a. "low" (score less than 50)
  - b. "medium" (score 50-99) or
  - c. "high" (score 100 or greater) potential for odor impacts.
- 2) If the evaluation identified a "low" potential, there are Level I BMPs that each farm must follow.
  - a. Reduce dust and feed accumulation in pens, aisles and on animals.
  - b. Manage ventilation to provide sufficient fresh airflow throughout the facility, keeping animals and facility surfaces clean and dry.
  - c. Manage manure to minimize damp, exposed manure that contributes to odor generation.
  - d. Remove mortalities daily and manage appropriately.
  - e. Match feed nutrients to animal nutrient requirements to avoid excess nutrient excretion.
  - f. Manage manure storage facility to reduce exposed surface area and off-site odor transfer.

# OMPs include:

- 3) If the evaluation identified a “medium” potential, the Level I BMPs must be implemented and maintenance of the BMPs must be documented.
- 4) If there is a “high” potential, the operator must implement Level I and Level II Odor BMPs to manage the impacts. Level II Odor BMPs are additional, specialized Odor BMPs that provide additional strategies for odor management. The plan writer in conjunction with the operator must determine which individual Level II Odor BMP(s) to install and operate based on those which are expected to be effective and feasible from a practical and economic perspective. The State Conservation Commission (SCC) has issued an Odor Management Guidance document listing Odor BMPs consistent with this approach. The SCC also provides a PA Odor BMP Reference List which provides detailed information on specific Odor BMPs.



*Covered manure storage on a poultry farm. The odor management regulations addressed animal housing and manure storage facilities but does not include land application of manure.*

## Act 38 Odor Management Plan - Odor Site Index

Operator Name		
Planner Name		
Type of Operation		
Voluntary Existing AEU's		
Proposed AEU's		
Previously Approved AEU's		
AEU's Covered by OMP		
Evaluation Distance		
<b>Part A: Odor Source Factors</b>		<b>OSI Score</b>
Facility Size Covered by OMP		
Site Livestock History		
Manure Handling System		
<b>Part B: Site Land Use</b>		
Ag Security Zone		
Ag Zoning		
Preserved Farm		
<b>Part C: Surrounding Land Use</b>		
Other Livestock >8 AEU in evaluation distance		
Distance to Nearest Property Line		
If nearest property is <300', is it preserved farmland		
Neighboring Homes		
Public Use Facilities		
Species Adjustment Factor		
<b>Final OSI Score</b>		

*Example of part of the Odor Site Index used to determine potential impacts surrounding the proposed construction or expansion.*



**Karl Dymond**  
**Odor Management Program Coordinator**  
**PDA – Region 3**  
**Route 92S, PO Box C**  
**Tunkhannock, Pa 18657**  
**(570) 836-2181, ext. 120**

### NOTES:

- The statewide odor management regulations preempt more stringent local regulations or ordinances on agricultural odors. They do not preempt the statewide Nutrient Management Program criteria.
- Odor Management Plans must be written by a certified Odor Management Specialist. The PA Department of Agriculture administers the Odor Management Specialist Certification program.
- OMPs must be submitted for review and approval to the State Conservation Commission.
- Non-CAO and non-CAFO operations may volunteer to develop and implement OMPs.
- Odor Management Plan approval is needed before construction activities can begin.
- *For more information, refer to:*  
<http://www.agriculture.pa.gov/Protect/StateConservationCommission/OdorManagementProgram/Pages/default.aspx>