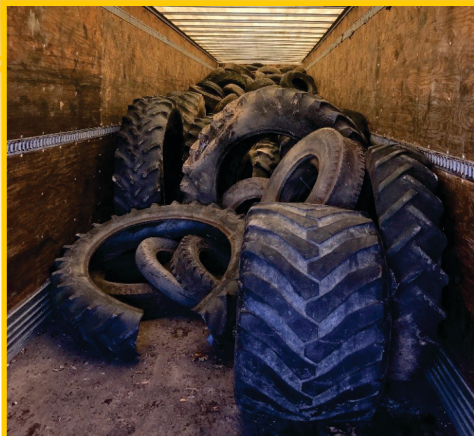


What Happens To Properly Disposed Tires?



- Did you know that tires are 100% recyclable or useable as an alternative energy source?
- Tires may be shredded, retreaded, or used as an alternative fuel source. Shredded tires are recycled into crumb rubber that is used in landscape projects, molded rubber goods, civil engineering projects and athletic fields.



Where Can I Report Violations And Illegal Dumping?



- Contact the Bureau of Municipal & Residual Waste at 717-787-7381
- Report scrap tires to DEP
<http://www.westnile.state.pa.us/action.htm>

Where Can I Take My Scrap?

- Most tire dealers will accept tires for a fee. Be sure to call your tire dealer for information.
- The easiest way to avoid accumulating scrap tires is to recycle them when you buy new ones.
- Find a tire collection program in your county
<http://www.westnile.state.pa.us/>

Don't Give Mosquitoes a Ride!



Proper Management of Scrap Tires

Waste tires present health, environmental and safety hazards. Rainwater accumulates in tire piles creating an ideal environment for mosquitoes, which are known to transmit West Nile virus and other mosquito-borne diseases.



pennsylvania

DEPARTMENT OF ENVIRONMENTAL
PROTECTION

<http://www.westnile.state.pa.us/>

3800-BO DEP4921 2/2018
G2161-FEB18

Concerns About Improperly Discarded Tires

Illegal Dumping:

- Tires are frequently tossed along roadways, over hillsides and in waterways because people don't know where to take them or don't want to pay for proper disposal.



- Illegally dumped tires breed mosquitoes, lower property values, encourage more dumping, and waste tax money because they are expensive to remove once they have been dumped.



Health Risks:

- Even one tire can pose a risk to human health.
- Tire piles serve as breeding grounds for mosquitoes that can transmit West Nile, Zika and Dengue.



- Mosquitoes breed in the stagnant water that collects inside tires.



Fire Risks:

- Scrap tire fires are difficult to extinguish and can burn for long periods.
- Tire fires generally start either as a result of arson or an accident.



- Tire fires release toxic black smoke and can contaminate the environment with an oily residue.

